



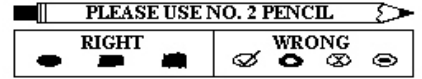
Paso Robles Public Schools

Parent Survey

Strongly Agree = A
 Agree = B
 Disagree = C
 Strongly Disagree = D
 Don't Know = E

Directions:

Please bubble in your response based on this answer key >>
 Fill in the bubble completely with a #2 pencil as shown.



School Wide

- | | |
|--|---|
| 1. This school provides a high quality educational program. (A B C D E) | 9. I receive valuable information about my child's education (report card, portfolio, conferences). (A B C D E) |
| 2. This school is a safe place to learn. (A B C D E) | 10. The amount of homework is appropriate. (A B C D E) |
| 3. Students in this school are well behaved. (A B C D E) | 11. The school newsletters are informative. (A B C D E) |
| 4. Teachers in this school care about students. (A B C D E) | 12. Class size reduction has benefited my child. (A B C D E) |
| 5. This school promotes understanding among students from various backgrounds. (A B C D E) | 13. The services offered through the library are instructive and effective. (A B C D E) |
| 6. The school has a good public image. (A B C D E) | 14. The use of computers enhances my child's learning. (A B C D E) |
| 7. My child has a positive attitude about school. (A B C D E) | 15. The office staff are friendly and helpful. (A B C D E) |
| 8. I have had opportunities to be involved in my child's/childrens education(PTA, Site Council, Volunteer) (A B C D E) | |

Classroom --- My child receives a quality education in the following areas:

- | | |
|---|---|
| 16. Language arts (reading, writing, speaking, listening, spelling). (A B C D E) | 20. Physical education (skills in physical activity, fitness, and team sports). (A B C D E) |
| 17. Mathematics (problem solving concepts and computation). (A B C D E) | 21. History/social science (research, study of communities, history and geography). (A B C D E) |
| 18. Science (study, observe, experiment, research and hypothesize). (A B C D E) | 22. Health education (good health topics, awareness of substance abuse). (A B C D E) |
| 19. Visual and performing arts (exposure to drama, art, music, and special assemblies). (A B C D E) | |

Bubble ONLY one of A,B,C or D to Rate Your Child's School

- | |
|---|
| 23. The school is doing an outstanding job of meeting the academic and social needs of my child. (A) |
| The school is meeting the academic and social needs of my child. (B) |
| I have some concerns about some aspects of the school program meeting my child's academic and social needs. (C) |
| The school is not meeting the academic and social needs of my child. (D) |

(Please respond to the following ONLY IF your child is INVOLVED in one of these programs)

Specific Programs

- | | |
|--|---|
| 24. The programs for gifted and talented students are effective. (A B C D E) | 26. After-school remediation/enrichment is of value. (A B C D E) |
| 25. Special reading programs (reading specialists, classroom assistants, other) are effective. (A B C D E) | 27. Special Education (RSP, SDC, speech) is of value. (A B C D E) |

Parents of Second Language Learners

- | | |
|---|--|
| 28. The instruction my child receives in Spanish is good. (A B C D E) | 30. The bilingual resources (library books, teaching materials, computer programs) are good. (A B C D E) |
| 29. The instruction my child receives in English is good. (A B C D E) | |

Parents of TITLE I Students (Does NOT apply if your child attends Kermit King or Pat Butler)

- | | |
|---|---|
| 31. Written notices, phone calls, meeting announcements, and conferences are timely and informative. (A B C D E) | 33. Parenting classes, parenting information, newsletters, and school/parent contact are helpful in improving student progress. (A B C D E) |
| 32. The information given explaining my child's participation and conferences are timely and informative. (A B C D E) | |